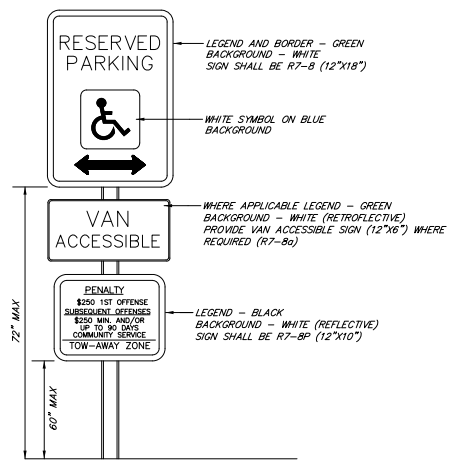
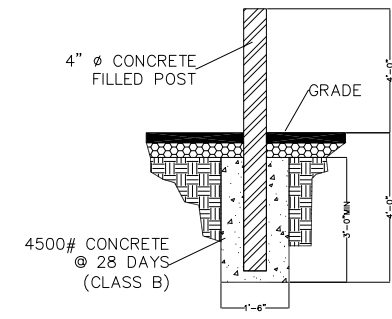
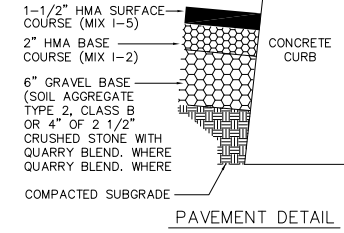


DEED BOOK 3984, PAGE 624

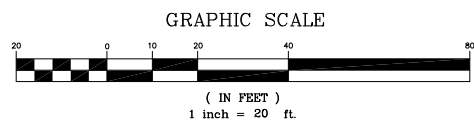
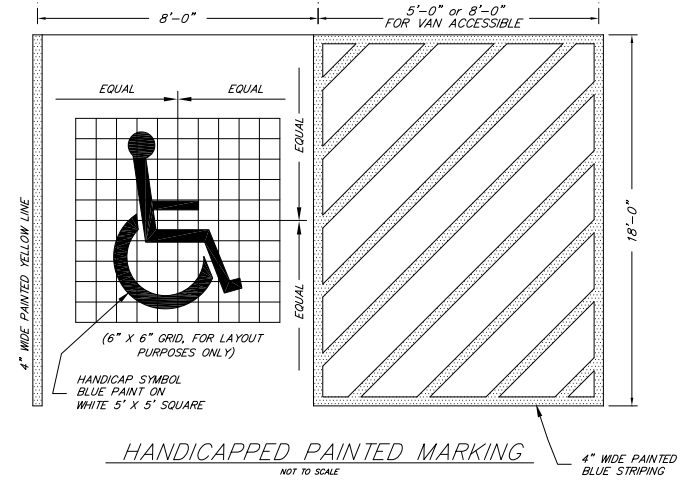
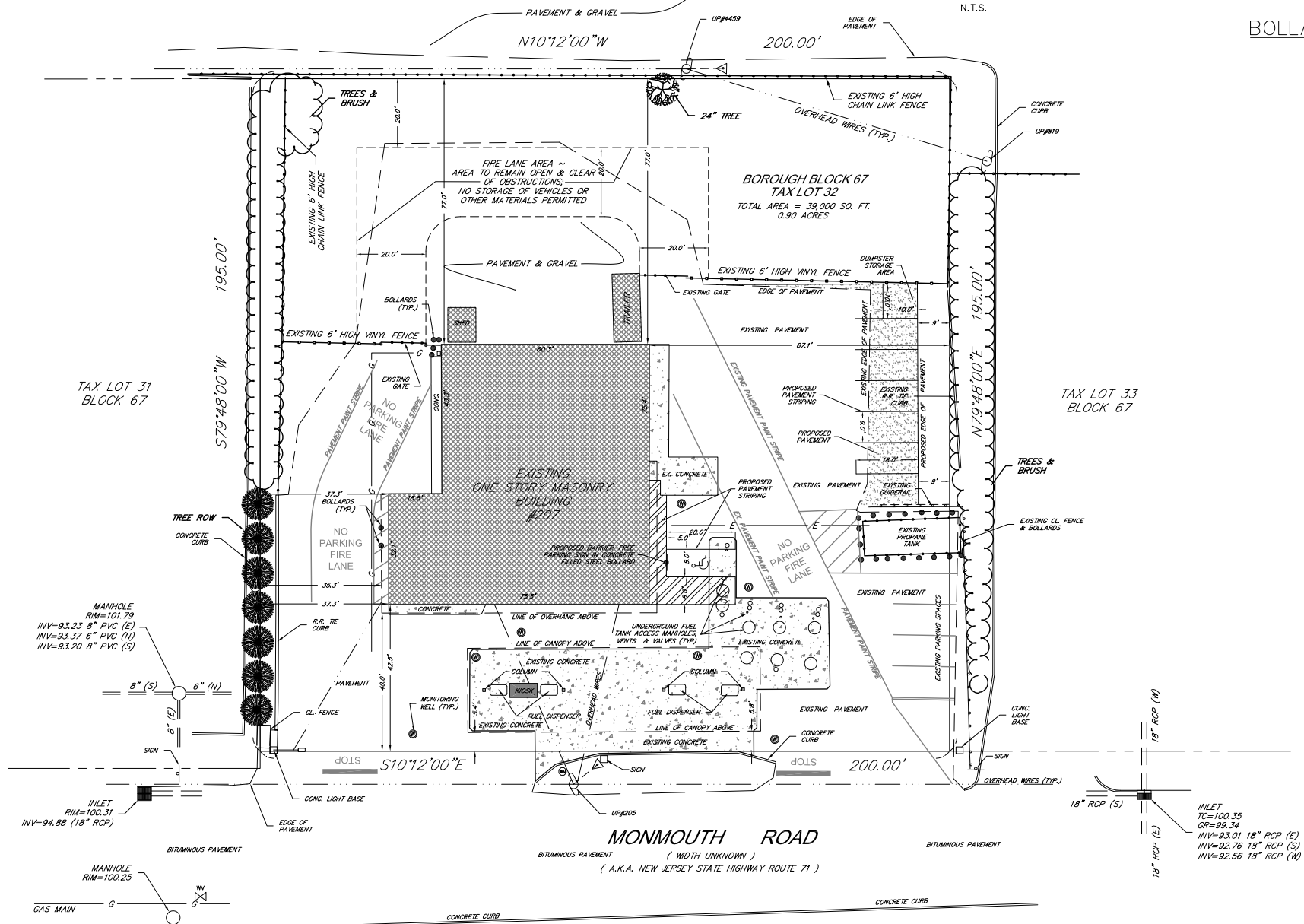


TAX LOT 33
BLOCK 67



NOTE: SIGNS SHALL MEET THE REQUIREMENTS OF THE MANUAL ON UNIFORM TRAFFIC CONTROL DEVICES.
BARRIER FREE VAN ACCESSIBLE PARKING SIGN
N.T.S.

WALL MOUNTED SIGN NOTES:
1. INSTALL SIGNS ON EXISTING WALL WITH MASONRY ANCHOR BOLTS, MINIMUM 4 BOLTS PER SIGN.
2. MOUNTING HEIGHT TO BE 72" MAX FROM GRADE TO BOTTOM OF R7-8.
3. INSTALL R7-8 ABOVE R7-8P AS REQUIRED BY N.J.S.A. 39:4-197.3c ABOVE "VAN ACCESSIBLE" SIGN AS REQUIRED BY FEDERAL REGISTER VOL. 56 No. 144 REGARDING ADA RULES AND REGULATIONS.



EXISTING PROPERTY CONDITIONS TAKEN FROM A CERTAIN MAP ENTITLED "AS-BUILT SURVEY TAX LOT 32, TAX BLOCK 67, BOROUGH OF WEST LONG BRANCH MONMOUTH COUNTY, NEW JERSEY (TAX MAP REFERENCE SHEET No. 4)", PREPARED BY NELSON ENGINEERING ASSOCIATES, INC., LATEST REVISED DATE NOVEMBER 30, 2018.

- LEGEND**
- ⊕ = UTILITY POLE W/ GUY WIRE
 - ⊕ = WATER VALVE
 - ⊕ = SIGN
 - ⊕ = MONITORING WELL
 - ⊕ = WATER METER

2.	LABELLED EXISTING FENCES	1-29-21	DHB	DHB
1.	ADDED NEW PAVEMENT AREA & DETAIL	1-25-21	DHB	DHB
NO.	REVISION DESCRIPTION	DATE	DRWN	CHKD BY

MINOR SITE PLAN
207 MONMOUTH ROAD
TAX BLOCK 67, TAX LOT 32
BOROUGH OF WEST LONG BRANCH
MONMOUTH COUNTY, NEW JERSEY
(TAX MAP REFERENCE BOROUGH OF WEST LONG BRANCH SHEET No. 4)

Nelson Engineering Associates, Inc.

444 NEPTUNE BOULEVARD, SUITE 4
NEPTUNE, NEW JERSEY 07753
TEL. (732)-918-2180
WWW.NELSONENG.NET
CERTIFICATE OF AUTHORIZATION # 24GA28014900

SITE ENGINEERING
TRAFFIC ENGINEERING
LANDSCAPE ARCHITECTURE
ENVIRONMENTAL STUDIES
LAND SURVEYING & MAPPING

David H. Boesch
DAVID H. BOESCH, L.L.A.
LICENSED LANDSCAPE ARCHITECT NEW JERSEY LICENSE No. AS000489

SCALE: 1"=20' DRAWN BY: DHB CHKD. BY: DHB
FILE: 110403 DATE: 01-15-2021 SHEET 1 OF 1