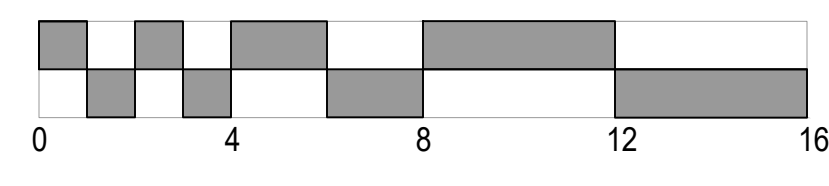


① **BASEMENT PLAN**
 BASEMENT AREA: 4,286 SF 1/4" = 1'-0"



MONMOUTH UNIVERSITY
 POLICE HEADQUARTERS

SEAL:
 Stephen J. Carlidge, AIA
 N.L.L.C. # A1008689

**SHORE POINT
 ARCHITECTURE, PA**
 108 South Main Street, Ocean Grove, New Jersey 07756
 P: 732.774.6900 F: 732.774.7250 www.shorepointarch.com

BASEMENT FLOOR PLAN
 SCALE: AS SHOWN DRAWN: JAC

DATE	REVISIONS/DRAWN/SCALE
12/4/19	MONMOUTH UNIVERSITY POLICE HEADQUARTERS

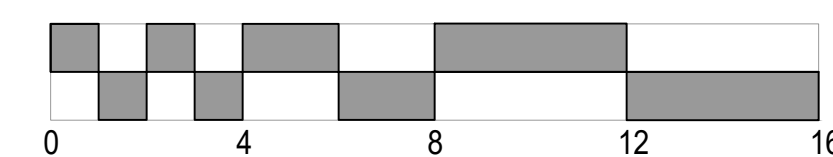
JOB NUMBER
 2019-28

A-0
 MONMOUTH

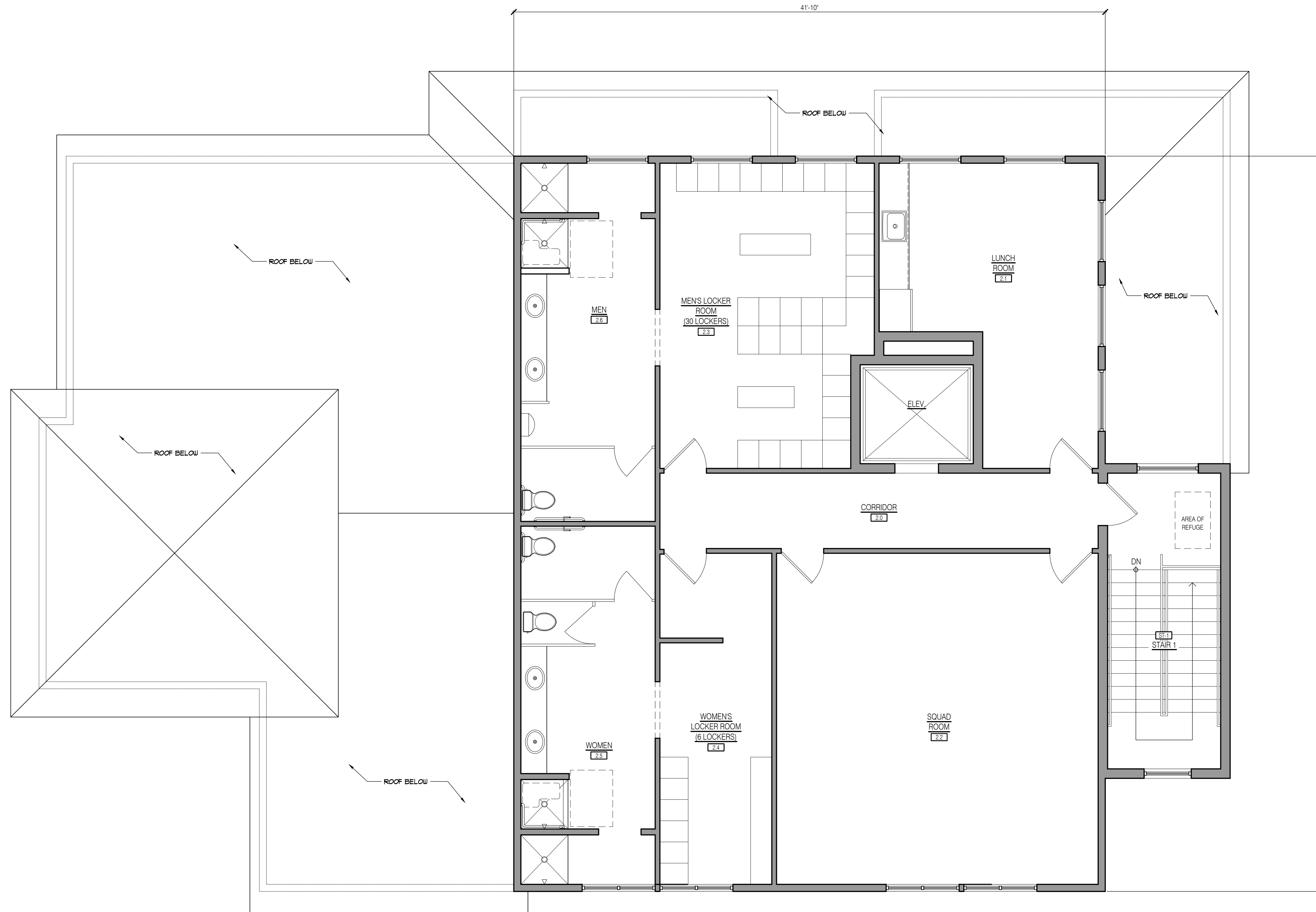


① **FIRST FLOOR PLAN**
 FIRST FLOOR AREA: 4,251 SF
 TOTAL BUILDING AREA: 10,909 SF

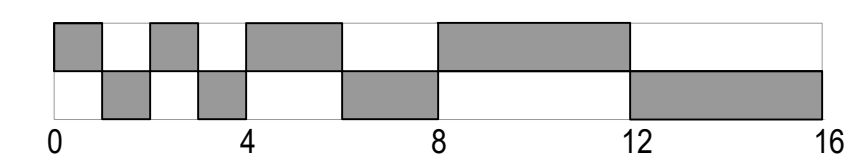
1/4" = 1'-0"



DATE	12/4/19
REVISIONS/DESCRIPTION	



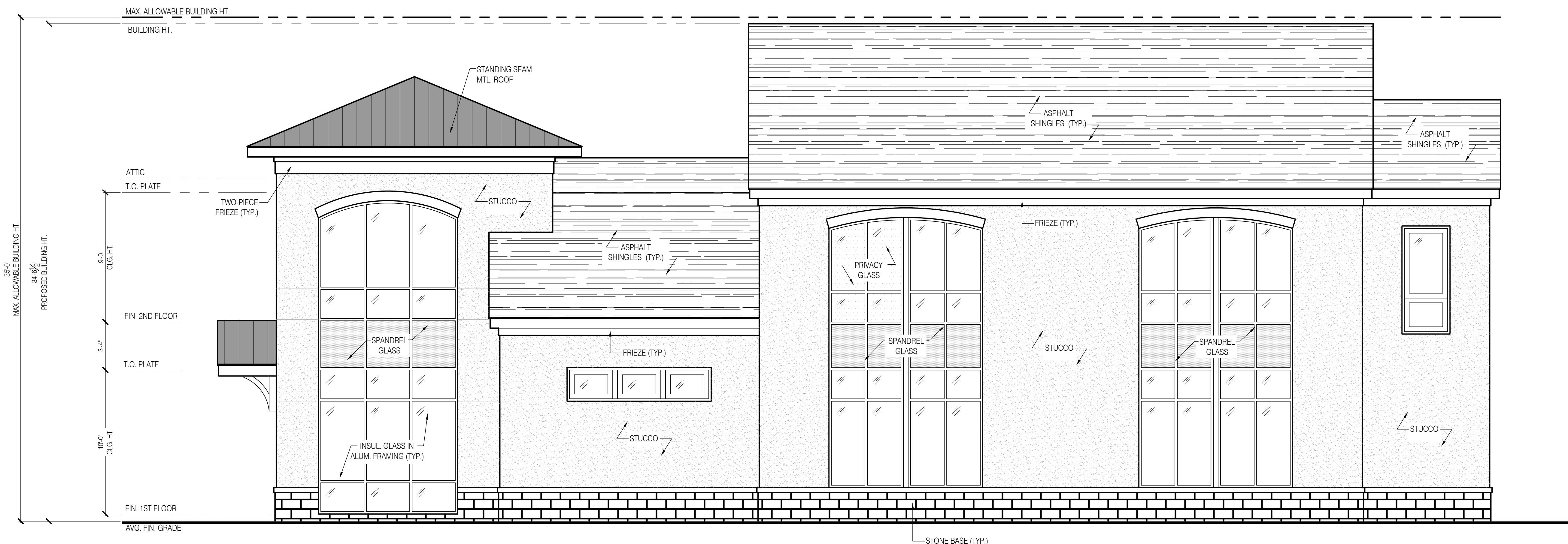
① SECOND FLOOR PLAN
 SECOND FLOOR AREA: 2,372 SF 1/4"=1'-0"



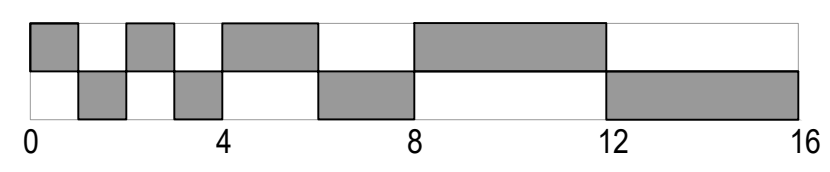
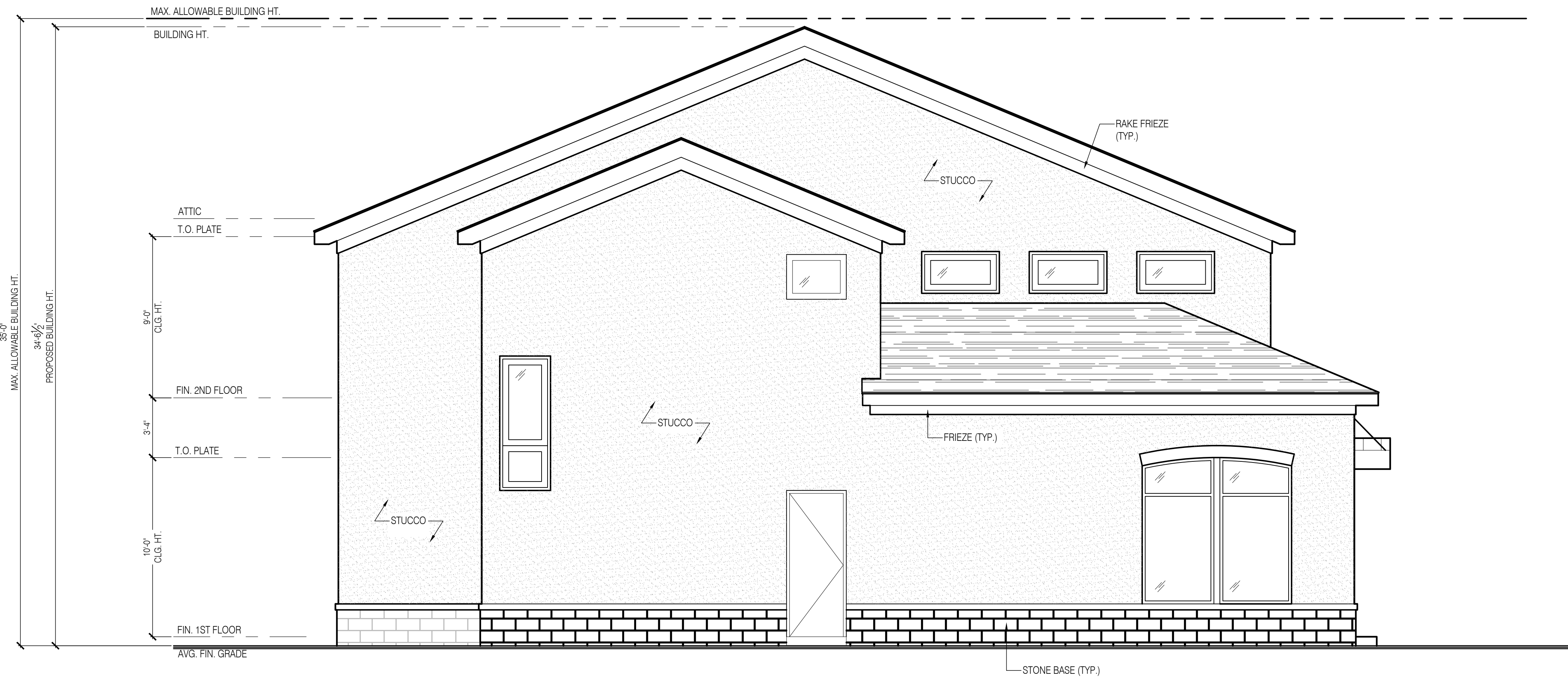
DATE	12/4/19
REVISIONS/DESCRIPTION	MONMOUTH UNIVERSITY POLICE HEADQUARTERS



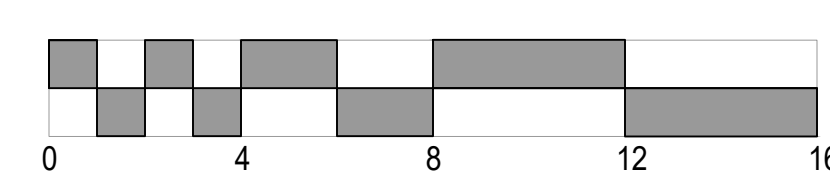
① WEST ELEVATION
1/4"=1'-0"



② SOUTH ELEVATION
1/4"=1'-0"



① EAST ELEVATION
1/4"=1'-0"



② NORTH ELEVATION
1/4"=1'-0"