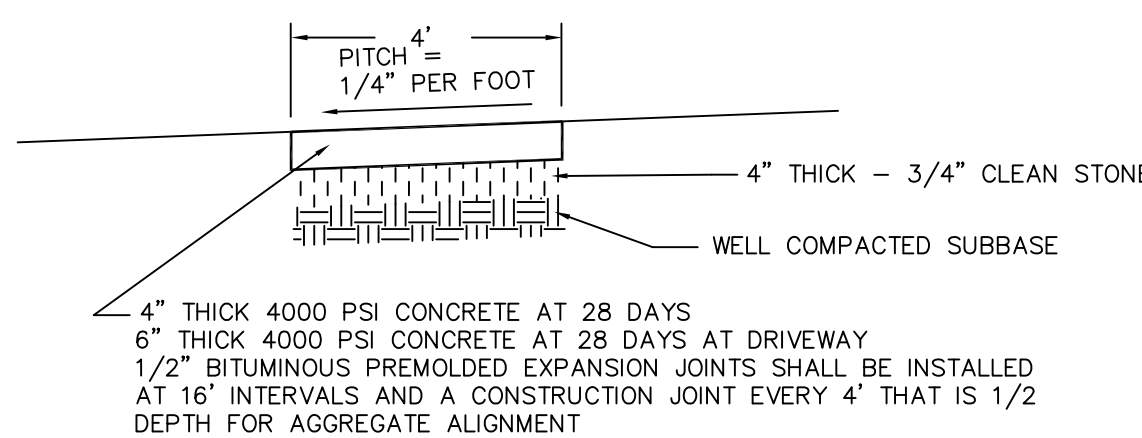
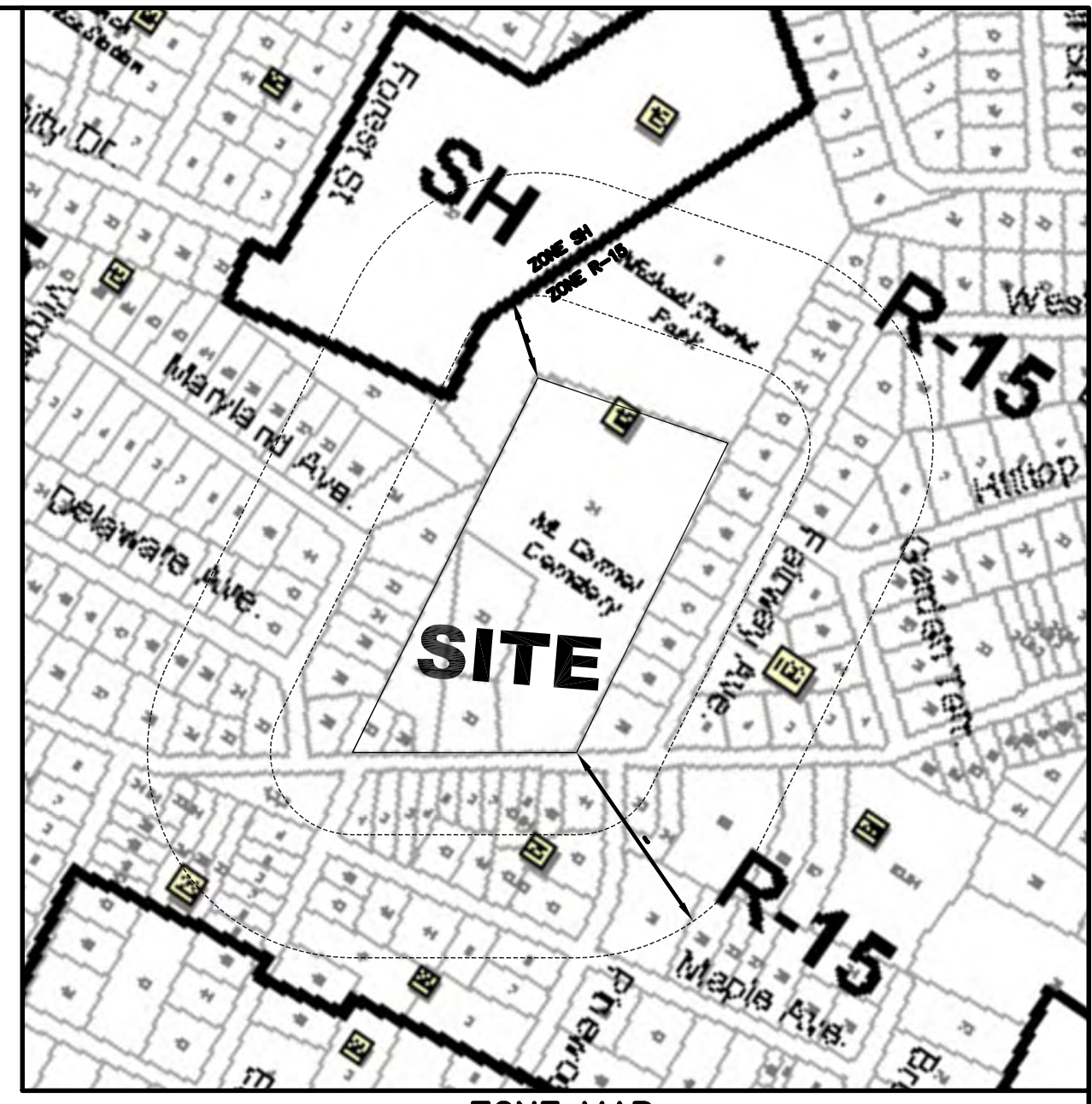


12'x13' TRASH DUMPSTER ENCLOSURE DETAIL

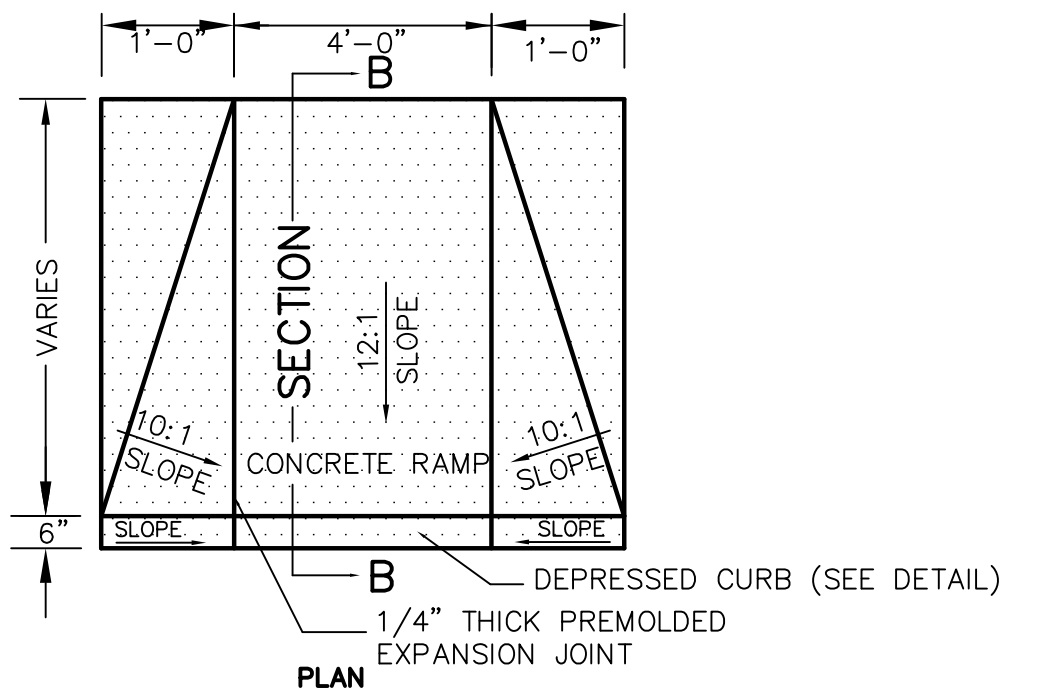


TYPICAL CONCRETE SIDEWALK DETAIL

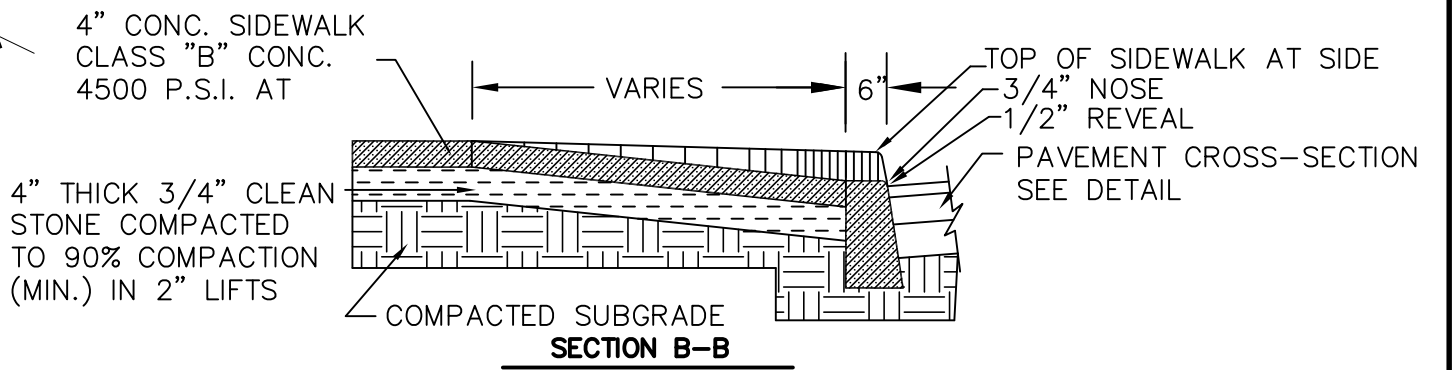
ACCESSIBLE RAMP DELINEATION CAST IN PLACE



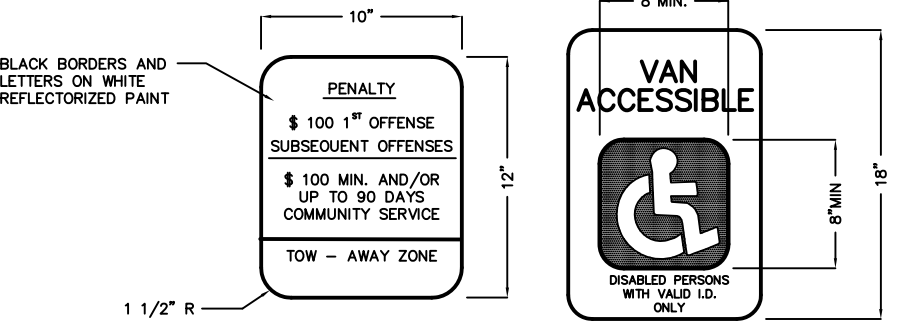
ZONE MAP



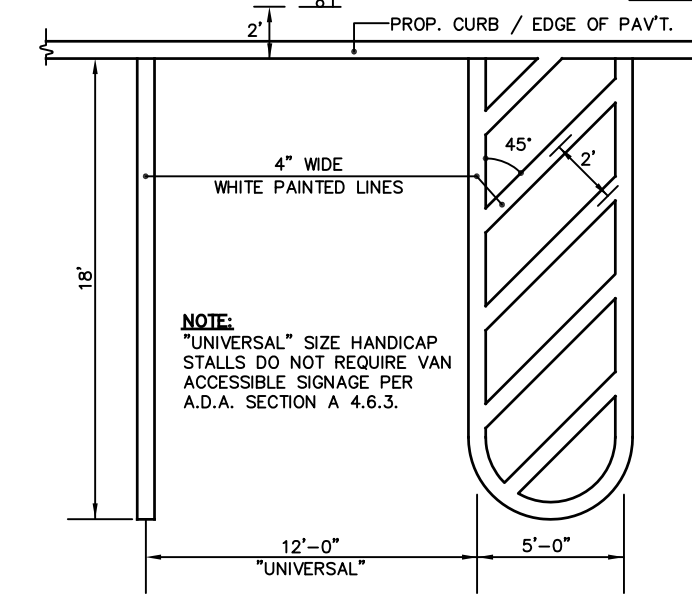
HANDICAP RAMP DETAIL



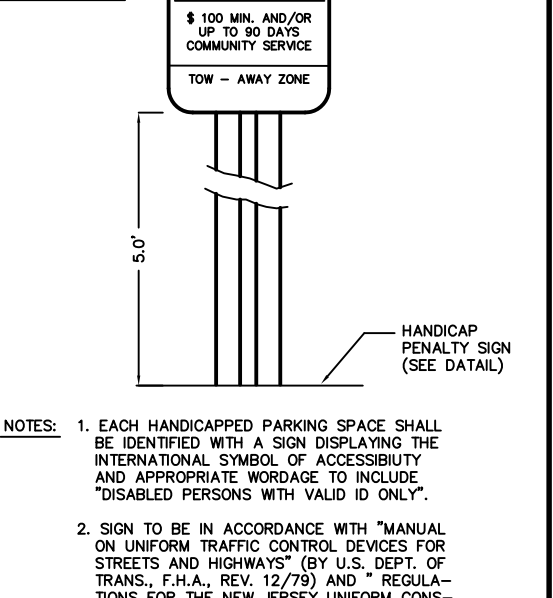
HANDICAP RAMP DETAIL



HANDICAP PENALTY SIGN DETAIL

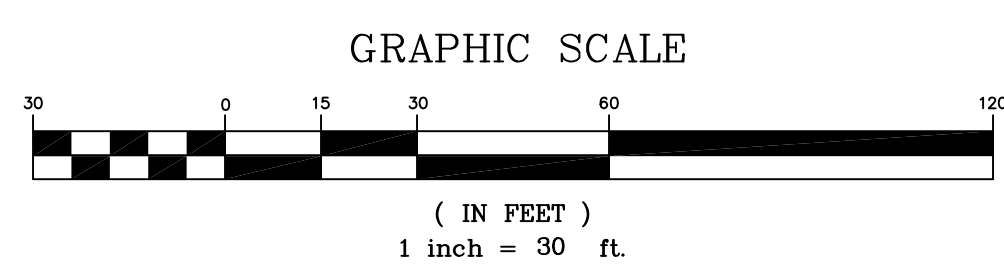
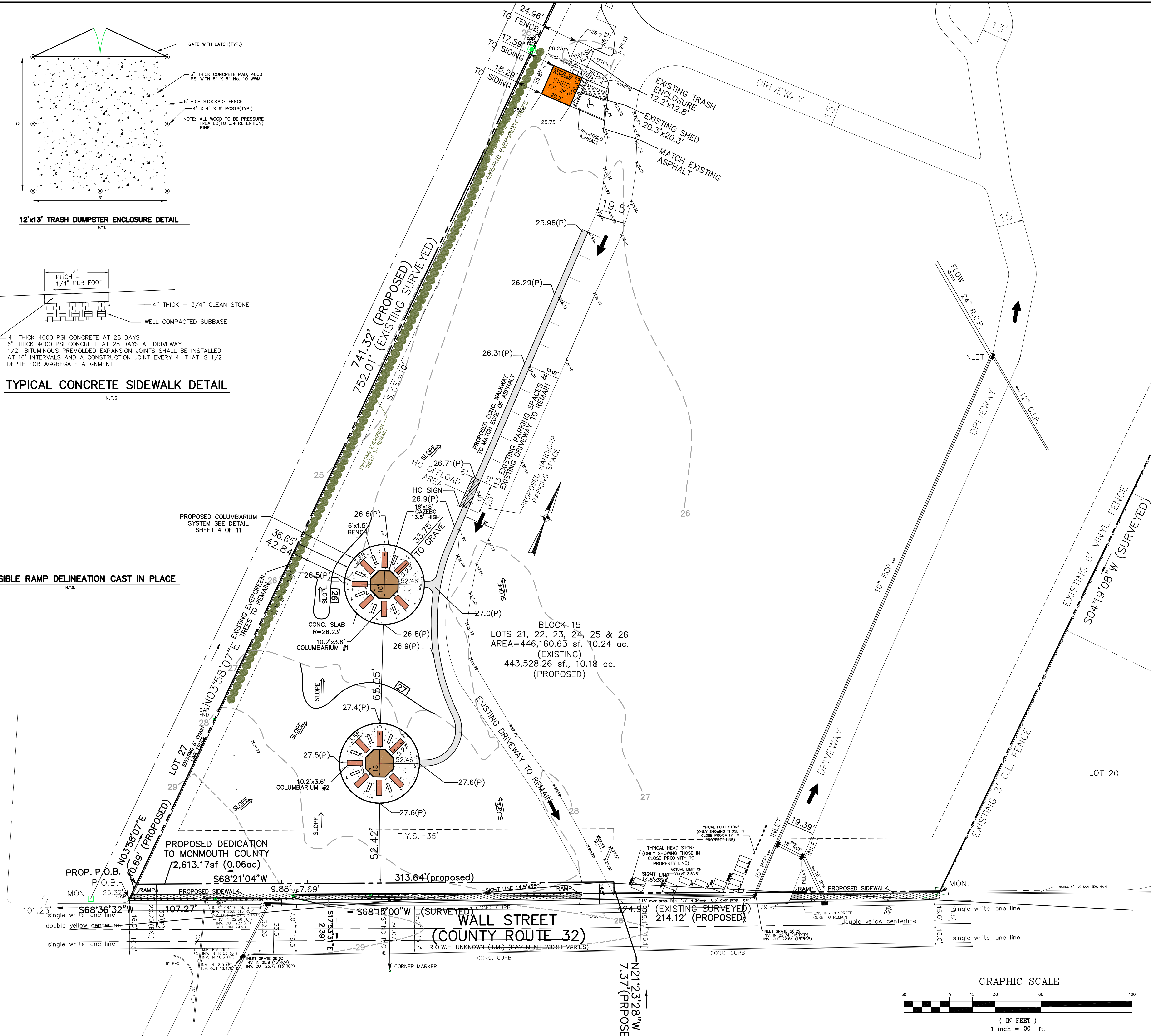


HANDICAP PARKING STALL DETAIL



HANDICAP SIGN DETAIL

MARYLAND AVENUE



3	REVISIONS AS PER BOROUGH BOARD MEETING OF 10/22/20	10/26/20	TG
2	REVISE AS PER BOROUGH ENGINEER AND BOROUGH PLANNER	08/31/2020	TG
1	REVISE COLUMBARIUM TO INCLUDE GAZEBO	1/31/2020	TG
REV.	DESCRIPTION	DATE	BY

SITE PLAN 30 SCALE FOR PRELIMINARY/FINAL SITE PLAN APPL
 LOTS 21, 22, 23, 24, 25 & 26 BLOCK 15
 113, 115, 117, 119 & 121 WALL STREET
 on T.M. SHEET 9
 BOROUGH OF WEST LONG BRANCH
 MONMOUTH COUNTY NEW JERSEY

LANDMARK
 SURVEYING AND ENGINEERING, INC.
 813 Main Street
 Avon-by-the-Sea, New Jersey 07717
 Tel: (732)775-8558 - Fax: (732)775-7848
 Email: Landmarkse@Optimum.net
 Web: www.Landmarkse.net

DANIEL W. CARUSO, P.E.
 N.J. PROFESSIONAL ENGINEER - GB35687

SCALE: 1"=30'
 DATE: 11/26/19
 BY: SHEET # 3 OF 11
 DRAWING: 14021BOROUGH SITE PLAN 10-26-20