

RECHARGE SUITABILITY BORING
 SOIL LOG & INTERPRETATION - Form
 Municipality: West Long Branch
 1. Log Number: 582
 2. Soil Log
 Depth: (feet)
 Top - Bottom:
 0" - 19" Dark brown (10YR 3/3) fine sandy loam
 19" - 32" Olive brown (2.5Y 4/4) fine heavy sand
 32" - 46" Light yellow brown (10YR 6/4) fine sand
 46" - 57" Olive brown (2.5Y 4/4) silty clay loam
 57" - 61" Olive (5Y 5/4) silty clay loam with many, medium, distinct strong brown (7.5YR 4/4) and pale olive (5Y 6/3) mottles at 57"
 61" - 84" Light olive brown (2.5Y 5/4) fine sand

3. Ground Water Observations:
 (X) Springs - Indicate Depth: 61"
 (X) Piezometer Flooded - Depth after 1.0 Hours: 61"
 4. Soil Limiting Zones (Check Appropriate Categories):
 () Fractured Rock Substratum - Depth to Top: () Massive Rock Substratum - Depth to Top
 () Excessively Coarse Horizon - Depth to Top: () Excessively Coarse Substratum - Depth to Top
 (X) Hydrologically Restraintive Horizon - Depth to Top to Bottom: (X) Hydrologically Restraintive Substratum - Depth to Top
 () Perched Zone of Saturation - Depth to Top to Bottom: (X) Regional Zone of Saturation - Depth to Top to Bottom
 () Perched Zone of Saturation - Depth to Top to Bottom: (X) Regional Zone of Saturation - Depth to Top to Bottom
 (A.S.A. SEASONAL HIGH WATER TABLE)
 5. Soil Suitability Classification: H1p, H1s, U1w, 1 (hydrologic group: "P", Sheet #24, Monmouth County Soil Survey, NJG (X) NJG)
 6. I hereby certify that the information furnished on this form (and the attachments thereto) is true and accurate.

SOIL LOG #2

RECHARGE SUITABILITY BORING
 SOIL LOG & INTERPRETATION - Form
 Municipality: West Long Branch
 1. Log Number: 583
 2. Soil Log
 Depth: (feet)
 Top - Bottom:
 0" - 23" Dark brown (10YR 3/3) fine sandy loam
 23" - 30" Olive brown (2.5Y 4/4) fine heavy sand
 30" - 43" Light yellow brown (10YR 6/4) fine sand
 43" - 56" Olive brown (2.5Y 4/4) silty clay loam
 56" - 70" Olive (5Y 5/4) silty clay loam with many, medium, distinct strong brown (7.5YR 4/4) and pale olive (5Y 6/3) mottles at 56"
 70" - 84" Light olive brown (2.5Y 5/4) fine sand

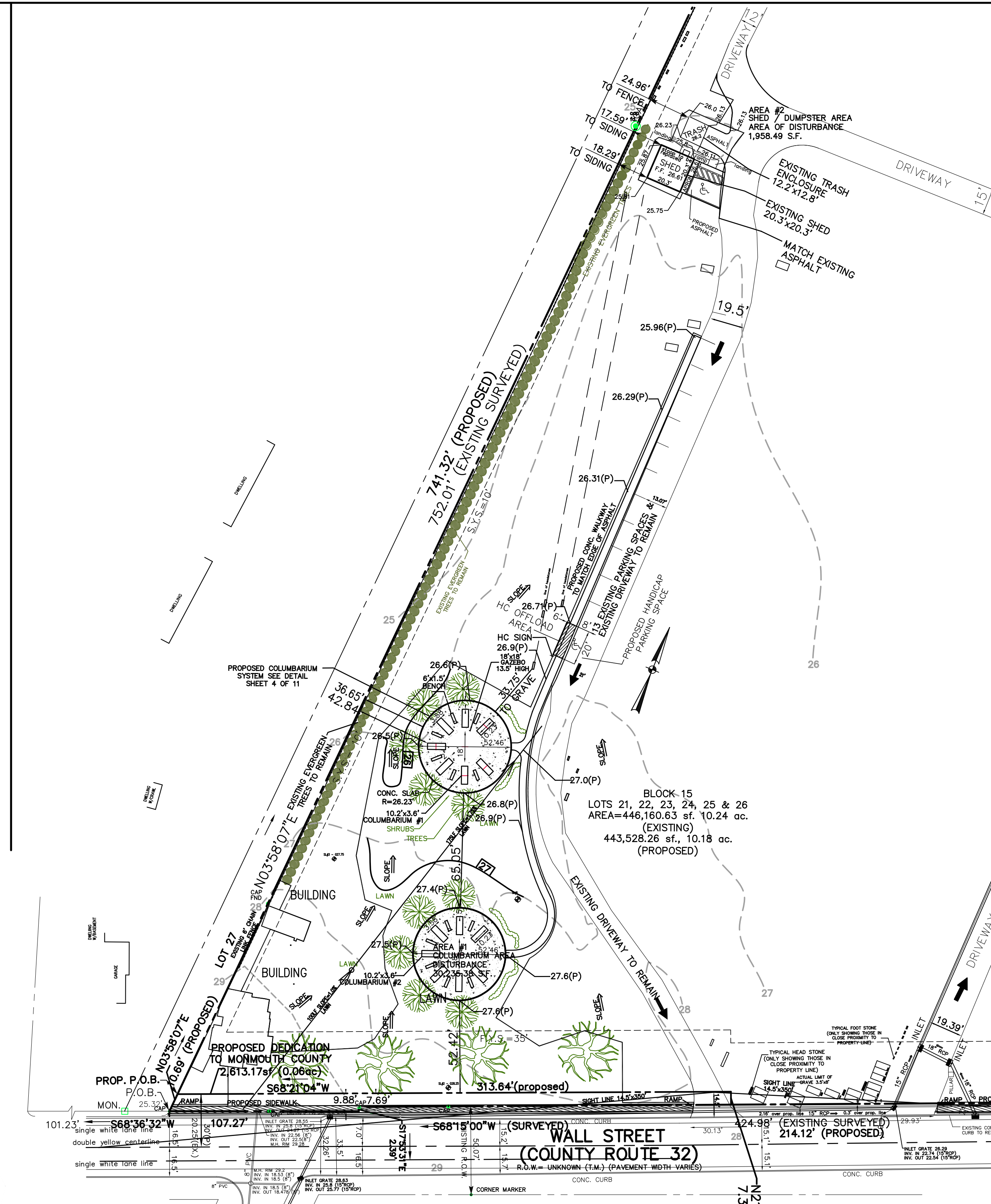
3. Ground Water Observations:
 (X) Springs - Indicate Depth: 56"
 (X) Piezometer Flooded - Depth after 1.0 Hours: 60"
 4. Soil Limiting Zones (Check Appropriate Categories):
 () Fractured Rock Substratum - Depth to Top: () Massive Rock Substratum - Depth to Top
 () Excessively Coarse Horizon - Depth to Top: () Excessively Coarse Substratum - Depth to Top
 (X) Hydrologically Restraintive Horizon - Depth to Top to Bottom: (X) Hydrologically Restraintive Substratum - Depth to Top
 () Perched Zone of Saturation - Depth to Top to Bottom: (X) Regional Zone of Saturation - Depth to Top to Bottom
 () Perched Zone of Saturation - Depth to Top to Bottom: (X) Regional Zone of Saturation - Depth to Top to Bottom
 (A.S.A. SEASONAL HIGH WATER TABLE)
 5. Soil Suitability Classification: H1p, H1s, U1w, 1 (hydrologic group: "P", Sheet #24, Monmouth County Soil Survey, NJG (X) NJG)
 6. I hereby certify that the information furnished on this form (and the attachments thereto) is true and accurate.

SOIL LOG #3

RECHARGE SUITABILITY BORING
 SOIL LOG & INTERPRETATION - Form
 Municipality: West Long Branch
 1. Log Number: 584
 2. Soil Log
 Depth: (feet)
 Top - Bottom:
 0" - 13" Dark brown (10YR 3/3) fine sandy loam
 13" - 23" Yellow brown (10YR 5/4) fine heavy sand
 23" - 35" Light yellow brown (10YR 6/4) fine sand
 35" - 49" Yellow (10YR 7/4) fine sand
 49" - 68" Olive brown (2.5Y 4/4) silty clay loam with many, medium, distinct strong brown (7.5YR 4/4) and pale olive (5Y 6/3) mottles at 49"
 68" - 84" Light olive brown (2.5Y 5/4) fine and medium sand

3. Ground Water Observations:
 (X) Springs - Indicate Depth: 59"
 (X) Piezometer Flooded - Depth after 1.0 Hours: 59"
 4. Soil Limiting Zones (Check Appropriate Categories):
 () Fractured Rock Substratum - Depth to Top: () Massive Rock Substratum - Depth to Top
 () Excessively Coarse Horizon - Depth to Top: () Excessively Coarse Substratum - Depth to Top
 () Hydrologically Restraintive Horizon - Depth to Top to Bottom: () Hydrologically Restraintive Substratum - Depth to Top
 () Perched Zone of Saturation - Depth to Top to Bottom: (X) Regional Zone of Saturation - Depth to Top to Bottom
 () Perched Zone of Saturation - Depth to Top to Bottom: (X) Regional Zone of Saturation - Depth to Top to Bottom
 (A.S.A. SEASONAL HIGH WATER TABLE)
 5. Soil Suitability Classification: 1 (hydrologic group: "P", Sheet #24, Monmouth County Soil Survey, NJG (X) NJG)
 6. I hereby certify that the information furnished on this form (and the attachments thereto) is true and accurate.

SOIL LOG #1



EXISTING DRAINAGE MAP

SCALE: 1"=40'

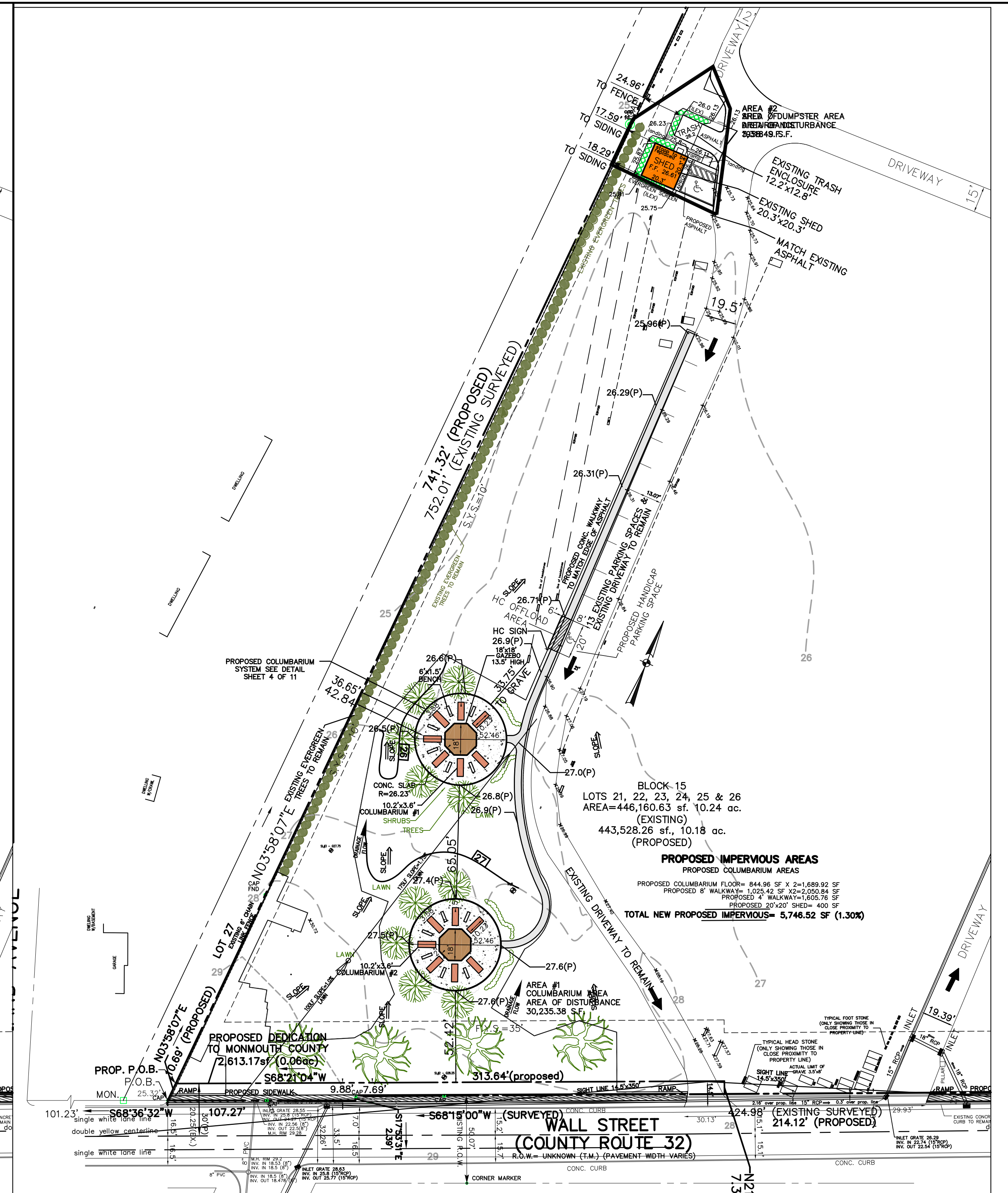
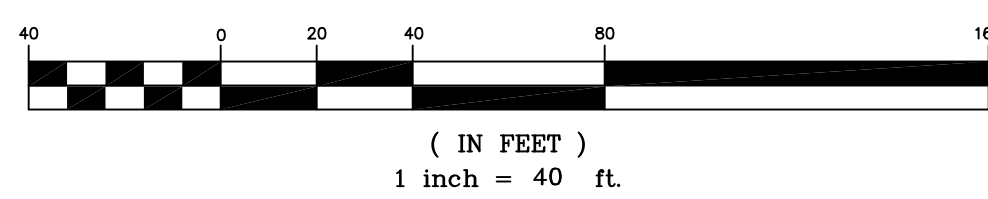
EXISTING DRAINAGE CONDITIONS AREA #1

SURFACE	AREA (S.F.)	AREA (AC.)	CN
LAWN AREAS	37,494.11	0.861	61
BUILDING	1167.14	0.027	98
BUILDING	305.75	0.007	98
TOTAL	38,967.00	0.895	

AREA #2

SURFACE	AREA (S.F.)	AREA (AC.)	CN
LAWN AREAS	3,139.71	0.072	61
IMPERVIOUS	178.29	0.004	98
TOTAL	3,318.00	0.076	

GRAPHIC SCALE



PROPOSED DRAINAGE MAP

SCALE: 1"=40'

PROPOSED DRAINAGE CONDITIONS AREA #1

SURFACE	AREA (S.F.)	AREA (AC.)	CN
LAWN AREAS	33,052.83	0.759	61
COLUMBARIUM & WALKWAYS	5,914.17	0.136	98
TOTAL	38,967.00	0.895	

AREA #2

SURFACE	AREA (S.F.)	AREA (AC.)	CN
LAWN AREAS	2,333.83	0.053	61
SHED & IMPERVIOUS	984.17	0.023	98
TOTAL	3,318.00	0.076	

3	REVISIONS AS PER BOROUGH BOARD MEETING OF 10/22/20	10/26/20	TG
2	REVISE AS PER BOROUGH ENGINEER AND BOROUGH PLANNER	08/31/2020	TG
1	REVISE COLUMBARIUM TO INCLUDE GAZEBO	1/31/2020	TG
	DESCRIPTION	DATE	BY

DRAINAGE MAP FOR PRELIMINARY/FINAL SITE PLAN APPL

LOTS 21, 22, 23, 24, 25 & 26 BLOCK 15
 113, 115, 117, 119 & 121 WALL STREET
 on T.M. SHEET 9
 BOROUGH OF WEST LONG BRANCH
 MONMOUTH COUNTY NEW JERSEY

LANDMARK
 SURVEYING AND ENGINEERING, INC.
 813 Main Street
 Avon-by-the-Sea, New Jersey 07717
 Tel: (732)775-8558 - Fax: (732)775-7848
 Email: Landmark@Optimum.net
 Web: www.Landmark.net

DANIEL W. CARUSO, P.E.
 N.J. PROFESSIONAL ENGINEER - GB35687

SCALE: AS NOTED DATE: 11/26/19
 BY: SHEET #: DRAWING:
 TG: 4 OF 11 14021BOROUGH SITE PLAN 10-26-20