

SWM_3&4_Storms

NOAA 24-hr D 100-Year Rainfall=8.90"

Prepared by HP

Printed 5/7/2021

HydroCAD® 10.10-4a s/n 10826 © 2020 HydroCAD Software Solutions LLC

Events for Pond SWMB_#4.0: Subsurface Stormwater Management

Event	Inflow (cfs)	Primary (cfs)	Elevation (feet)	Storage (acre-feet)
NJWQDS	4.25	0.06	33.29	0.107
1-Year	6.31	0.06	34.04	0.384
2-Year	7.54	0.06	34.28	0.472
5-Year	10.91	0.26	34.63	0.602
10-Year	13.39	0.53	34.83	0.673
25-Year	17.40	3.36	34.89	0.695
50-Year	21.08	3.94	35.26	0.827
100-Year	24.75	4.51	35.71	0.981

SWM_3&4_Storms - PumpFail

NOAA 24-hr D 100-Year Rainfall=8.90"

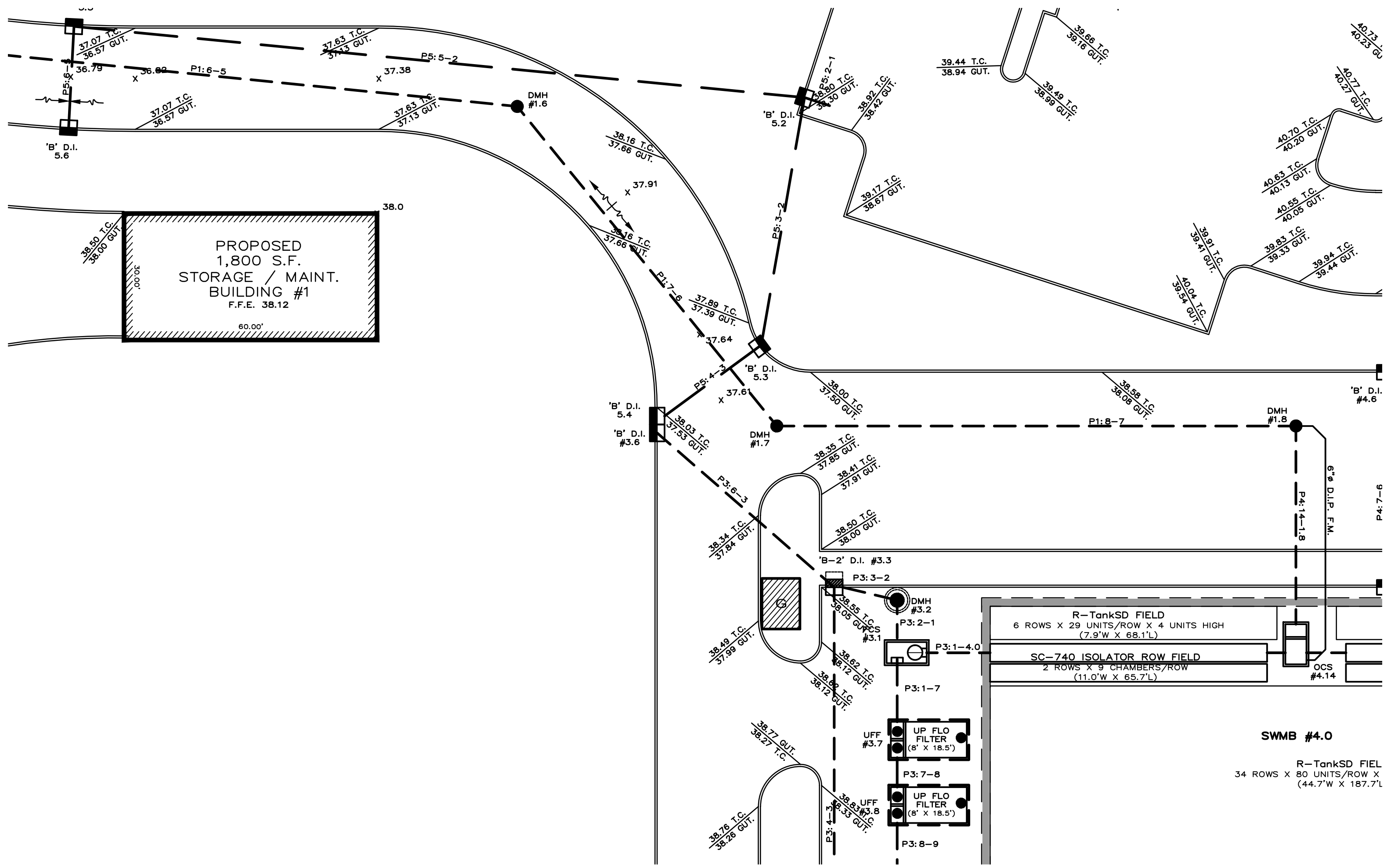
Prepared by HP

Printed 5/7/2021

HydroCAD® 10.10-4a s/n 10826 © 2020 HydroCAD Software Solutions LLC

Events for Pond SWMB_#4.0: Subsurface Stormwater Management

Event	Inflow (cfs)	Primary (cfs)	Elevation (feet)	Storage (acre-feet)
NJWQDS	4.25	0.06	33.29	0.107
1-Year	6.31	0.06	34.04	0.384
2-Year	7.54	0.06	34.28	0.472
5-Year	10.91	0.26	34.63	0.602
10-Year	13.39	0.53	34.83	0.673
25-Year	17.40	1.13	35.23	0.815
50-Year	21.08	1.69	35.67	0.969
100-Year	24.75	5.90	37.69	1.068



PROPOSED
1,800 S.F.
STORAGE / MAINT.
BUILDING #1
F.F.E. 38.12

R-TankSD FIELD
6 ROWS X 29 UNITS/ROW X 4 UNITS HIGH
(7.9'W X 68.1'L)

SC-740 ISOLATOR ROW FIELD
2 ROWS X 9 CHAMBERS/ROW
(11.0'W X 65.7'L)

SWMB #4.0

R-TankSD FIEL
34 ROWS X 80 UNITS/ROW X
(44.7'W X 187.7'L)