

## Tree Replacement Tabulation

(Based upon W.L.B. Ordinance 23-4.4, Rule 4)

Replacement Tree Diameter =	3	inches (i.e., 2½ to 3½ caliper)		
#	Tree Diameter, D	30% of D (in)	Tree	Shrub
			Replacement	Replacement
1	4	1.2	0	0
2	4	1.2	0	0
3	4	1.2	0	0
4	6	1.8	1	0
5	6	1.8	1	0
6	6	1.8	1	0
7	6	1.8	1	0
8	6	1.8	1	0
9	6	1.8	1	0
10	6	1.8	1	0
11	6	1.8	1	0
12	6	1.8	1	0
13	6	1.8	1	0
14	6	1.8	1	0
15	6	1.8	1	0
16	6	1.8	1	0
17	8	2.4	1	0
18	8	2.4	1	0
19	8	2.4	1	0
20	8	2.4	1	0
21	8	2.4	1	0
22	8	2.4	1	0
23	8	2.4	1	0
24	8	2.4	1	0
25	8	2.4	1	0
26	8	2.4	1	0
27	8	2.4	1	0
28	8	2.4	1	0
29	8	2.4	1	0
30	8	2.4	1	0

Replacement Tree Diameter =		3	inches (i.e., 2½ to 3½ caliper)	
#	Tree Diameter, D	30% of D (in)	Tree	Shrub
			Replacement	Replacement
31	8	2.4	1	0
32	8	2.4	1	0
33	8	2.4	1	0
34	8	2.4	1	0
35	8	2.4	1	0
36	8	2.4	1	0
37	10	3	1	0
38	10	3	1	0
39	10	3	1	0
40	10	3	1	0
41	10	3	1	0
42	10	3	1	0
43	10	3	1	0
44	10	3	1	0
45	10	3	1	0
46	10	3	1	0
47	10	3	1	0
48	10	3	1	0
49	10	3	1	0
50	10	3	1	0
51	10	3	1	0
52	10	3	1	0
53	10	3	1	0
54	10	3	1	0
55	10	3	1	0
56	10	3	1	0
57	10	3	1	0
58	10	3	1	0
59	10	3	1	0
60	10	3	1	0
61	10	3	1	0
62	10	3	1	0
63	10	3	1	0

Replacement Tree Diameter =		3	inches (i.e., 2½ to 3½ caliper)	
#	Tree Diameter, D	30% of D (in)	Tree	Shrub
			Replacement	Replacement
64	10	3	1	0
65	12	3.6	1	0
66	12	3.6	1	0
67	12	3.6	1	0
68	12	3.6	1	0
69	12	3.6	1	0
70	12	3.6	1	0
71	12	3.6	1	0
72	12	3.6	1	0
73	12	3.6	1	0
74	12	3.6	1	0
75	12	3.6	1	0
76	12	3.6	1	0
77	12	3.6	1	0
78	12	3.6	1	0
79	12	3.6	1	0
80	12	3.6	1	0
81	12	3.6	1	0
82	12	3.6	1	0
83	12	3.6	1	0
84	12	3.6	1	0
85	12	3.6	1	0
86	12	3.6	1	0
87	12	3.6	1	0
88	12	3.6	1	0
89	12	3.6	1	0
90	12	3.6	1	0
91	12	3.6	1	0
92	12	3.6	1	0
93	12	3.6	1	0
94	12	3.6	1	0
95	12	3.6	1	0
96	15	4.5	1	0

Replacement Tree Diameter =		3	inches (i.e., 2½ to 3½ caliper)	
#	Tree Diameter, D	30% of D (in)	Tree	Shrub
			Replacement	Replacement
97	15	4.5	1	0
98	15	4.5	1	0
99	15	4.5	1	0
100	15	4.5	1	0
101	15	4.5	1	0
102	15	4.5	1	0
103	15	4.5	1	0
104	15	4.5	1	0
105	15	4.5	1	0
106	15	4.5	1	0
107	15	4.5	1	0
108	15	4.5	1	0
109	18	5.4	2	0
110	18	5.4	2	0
111	18	5.4	2	0
112	18	5.4	2	0
113	18	5.4	2	0
114	18	5.4	2	0
115	18	5.4	2	0
116	18	5.4	2	0
117	18	5.4	2	0
118	18	5.4	2	0
119	18	5.4	2	0
120	18	5.4	2	0
121	18	5.4	2	0
122	18	5.4	2	0
123	18	5.4	2	0
124	18	5.4	2	0
125	20	6	2	0
126	20	6	2	0
127	20	6	2	0
128	20	6	2	0
129	20	6	2	0

Replacement Tree Diameter =		3	inches (i.e., 2½ to 3½ caliper)	
#	Tree Diameter, D	30% of D	Tree	Shrub
		(in)	Replacement	Replacement
130	20	6	2	0
131	20	6	2	0
132	20	6	2	0
133	20	6	2	0
134	20	6	2	0
135	20	6	2	0
136	20	6	2	0
137	20	6	2	0
138	20	6	2	0
139	20	6	2	0
140	24	7.2	2	0
141	24	7.2	2	0
142	24	7.2	2	0
143	24	7.2	2	0
144	24	7.2	2	0
145	24	7.2	2	0
146	24	7.2	2	0
147	24	7.2	2	0
148	24	7.2	2	0
149	24	7.2	2	0
150	24	7.2	2	0
151	24	7.2	2	0
152	24	7.2	2	0
153	24	7.2	2	0
154	24	7.2	2	0
155	24	7.2	2	0
156	24	7.2	2	0
157	24	7.2	2	0
158	30	9	3	0
159	30	9	3	0
160	30	9	3	0
161	30	9	3	0
162	36	10.8	3	2

Replacement Tree Diameter =		3	inches (i.e., 2½ to 3½ caliper)	
#	Tree Diameter, D	30% of D	Tree	Shrub
		(in)	Replacement	Replacement
163	36	10.8	3	2
164	36	10.8	3	2
165	60	18	3	9
166	60	18	3	9
<b>REQUIRED TOTALS</b>			<b>230</b>	<b>24</b>



TREE REMOVAL - 1

CAMPUS USE AND SITE IMPROVEMENTS

**MONMOUTH UNIVERSITY**

'D' & 'C' VARIANCE / PRELIMINARY & FINAL SITE PLANS

BLOCK 39, LOTS 1 THRU 5, 7, 8, 9, 11, 12.01 & 12.02 -- TAX MAP SHEET NOS. 15 & 18

ADJACENT STREETS: LARCHWOOD, CEDAR & NORWOOD AVENUES -- LAND USE ZONES: R-22 & I

BOROUGH OF WEST LONG BRANCH MONMOUTH COUNTY, NEW JERSEY

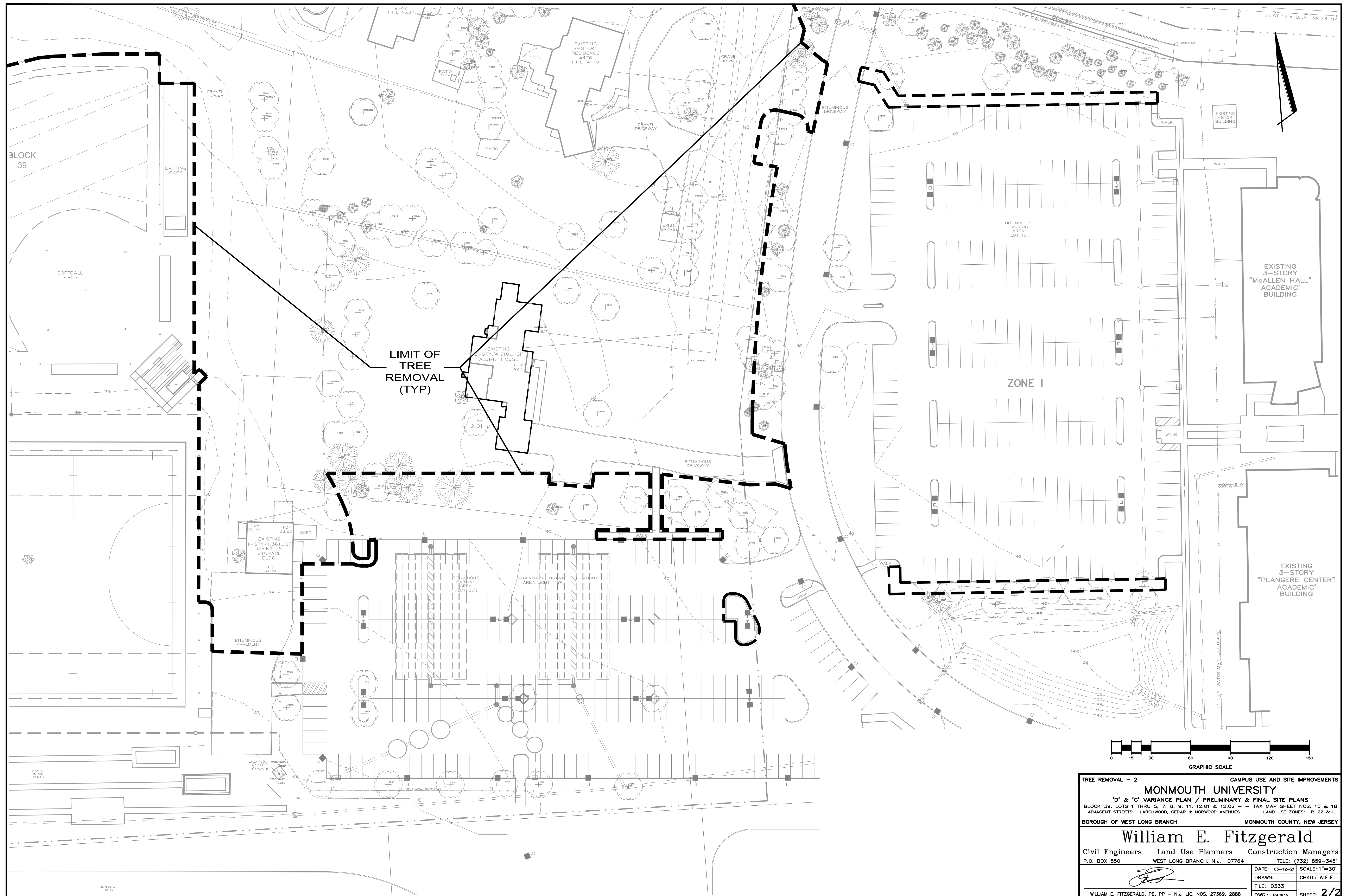
**William E. Fitzgerald**

Civil Engineers - Land Use Planners - Construction Managers

P.O. BOX 550 WEST LONG BRANCH, N.J. 07764 TELE: (732) 859-3481

DATE: 05-12-21	SCALE: 1"=30'
DRAWN:	CHKD.: W.E.F.
FILE: 0333	DWG.: PARK19
SHEET: 1/2	

WILLIAM E. FITZGERALD, PE, PP - N.J. LIC. NOS. 27369, 2888



TREE REMOVAL - 2 CAMPUS USE AND SITE IMPROVEMENTS

**MONMOUTH UNIVERSITY**

'D' & 'C' VARIANCE PLAN / PRELIMINARY & FINAL SITE PLANS


BLOCK 39, LOTS 1 THRU 5, 7, 8, 9, 11, 12.01 & 12.02 -- TAX MAP SHEET NOS. 15 & 18  
ADJACENT STREETS: LARCHWOOD, CEDAR & NORWOOD AVENUES -- LAND USE ZONES: R-22 & I

BOROUGH OF WEST LONG BRANCH MONMOUTH COUNTY, NEW JERSEY

**William E. Fitzgerald**

Civil Engineers - Land Use Planners - Construction Managers

P.O. BOX 550 WEST LONG BRANCH, N.J. 07764 TELE: (732) 859-3481

 DRAWN: _____ FILE: 0333 WILLIAM E. FITZGERALD, PE, PP - N.J. LIC. NOS. 27369, 2888	DATE: 05-12-21 <span style="float: right;">SCALE: 1"=30'</span> CHKD.: W.E.F. DWG.: PARK19 <span style="float: right;">SHEET: 2/2</span>
---	--